



The simple way  
to Enhance  
**Profitability**

**Training Calendar**  
April 2016 to March 2017

## TRAINING PROGRAMME DETAILS

PROGRAM CODE	TRAINING PROGRAM	NO. OF DAYS	PROGRAM CONTENTS	USEFUL FOR	INVESTMENT ₹
LT01	SELECTION OF LV SWITCHGEAR AND APPLICATIONS	5	Need for switchgear, LV switchgear terminologies, product standards, fault current calculation for LV system, Selection & application of low voltage switchgears - like contactors, thermal overload relays, motor starters, HRC fuses, SDF units, MCCBs, ACBs with microprocessor releases etc. along with their accessories, discrimination, advanced motor protection with microprocessor based motor protection relays, MCBs/ELCBs/DBs, overview busbar trunking, timers, panel accessories, capacitor selection for P.F. improvement, Classroom sessions supported by workshop demonstrations.	Engineers/technical team members from consulting firms, panel builders, projects, OEMs, industries, contractors, end users etc., involved in selection of LV switchgear	14,000
LT02	BEST MAINTENANCE PRACTICES IN LV SWITCHGEAR	5	Safety & good maintenance practices, complete hands-on workshop sessions on testing, troubleshooting & maintenance of low voltage switchgear such as contactors, overload relays, motor starters, MCCBs, ACBs, etc., good termination practices to LV switchgear, fitting, setting & testing of various types of accessories/releases on circuit breakers, testing of capacitors.	Engineers/technical team members working in the Electrical Maintenance Department	12,500
LT03	BREAKER MAINTENANCE WORKSHOP - C-POWER ACB	3	Thorough hands-on training on C-Power range of Air Circuit Breakers, testing, setting & programming of various types of ACB microprocessor based protection releases like SR-71/SR21i, fitting Accessories and operation of manual & electrical ACB, Study of control circuit-closing & tripping, introduction to U-Power OMEGA ACBs.	Engineers/technical team members working in the Electrical Maintenance Department	6,750
LT04	BREAKER MAINTENANCE WORKSHOP - U-POWER OMEGA ACB	2	Complete hands-on training on U-Power Omega range of air circuit breakers. Including pole assembly replacement, Fixing & testing of various accessories. Testing, setting & programming of various types of microprocessor based releases.	Engineers/technical team members working in the Electrical Maintenance Department	4,500
LT05	SWITCHBOARD ELECTRICAL DESIGN	3	Introduction to various standards for LV switchboard assembly including IEC 61439, types of panels, forms of separation, fault current calculations as applicable to low voltage switchgear, bus bar selection & design, selection of current transformers, cable selection, sizing of control transformers, earthing as applicable to LV switchboards, ingress protection(IP), good termination practices. Type tests & routine tests as applicable to LV switchboards, classroom sessions with case studies.	Engineers/technical team members from consulting firms, panel builders, projects, OEMs, industries, contractors, end users etc., involved in electrical design of switchboards	10,000
LT06	POWER DISTRIBUTION IN BUILDINGS	3	Design parameters relevant to large buildings. Procedure for load estimation; sizing of transformers and DG sets. Sizing of Low Voltage switchgears, distribution boards, BBT, MCBs, ELCBs. Fault current calculations. Earthing basics, relevant IE rules. Classroom session supported by workshop demonstration.	Engineers working on electrical systems in projects, residential buildings, commercial complexes, hotels, hospitals, etc.	10,000
LT07	ELECTRICAL SAFETY	1	Basics – Safety, Importance of Safety, Electrical Safety, Types of Hazards, Fire, Shock, Effects of Fire and Shock, Safety in Residences, Safety in Industrial and Commercial premises, Hazard identification, detection and control – Fire and Shock Hazard prevention, Requirements by norms - Local norms, central norms.OHSAS requirement,First aid in case of Electric shock and burns	Engineers/technical team members working in the Electrical design, operation & maintenance Department	2,500
LT08	SELECTION & APPLICATION OF DRIVES	3	Basics of LV motors, inverter duty motor, basics of LV AC VFDs, selection & application of AC VFDs, wiring diagram, parameter setting, salient features, energy conservation with AC VFDs, VFD vs soft starter. Classroom sessions supported by workshop demonstrations.	Electrical/electronic/ instrumentation engineers handling motors & drives in industries & OEMs	10,000
LT09	REACTIVE POWER & HARMONICS MITIGATION	2	What is PF, types of LV capacitors, selection criteria, power factor improvement - concepts, methods & advantages, APFC panels, dynamic compensation, harmonics in power systems, source, types, harmful effects & mitigation of harmonics - overview of passive & active filters.	Electrical engineers working with consultants, panel builders, contractors, industries, commercial establishments, etc.	6,750
LT10	INTRODUCTION TO MEDIUM VOLTAGE SWITCHGEAR	2	Selection & application of vacuum circuit breaker, specification of vacuum circuit breaker, fault current calculation, vacuum vs SF <sub>6</sub> as a medium of CB, MV metal clad panel, MV panel bus bar design, installation, testing and commissioning of MV panel & introduction to protection of MV switchgear and RMU. Classroom session supported by workshop demonstration.	Electrical engineers working with consultants, panel builders, projects, contractors, operation & maintenance of electrical equipment, testing agencies, electrical utilities, etc.	6,750
LT11	INDUSTRIAL PROTECTION WITH NUMERICAL RELAYS	4	Introduction to protective relaying, terminologies, ANSI codes, CTs, PTs, Fault current calculations, relay co-ordination, feeder protection, motor protection, transformer protection, generator protection. Classroom sessions supported by workshop demonstration (excludes distance protections)	Electrical engineers working with consultants, panel builders, projects, contractors, operation & maintenance of electrical equipment, testing agencies, electrical utilities, etc.	12,500

Note: For any special or customised programs, you may contact respective Training Centre.

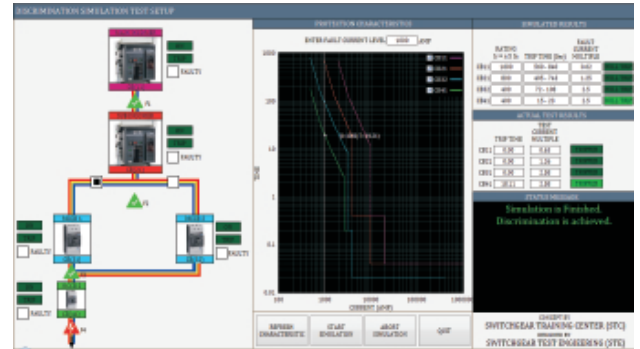
PROGRAM CODE	TRAINING PROGRAM	NO. OF DAYS	PROGRAM CONTENTS	USEFUL FOR	INVESTMENT ₹
LT12	CONSERVATION & MANAGEMENT OF ELECTRICAL ENERGY	2	Importance of energy conservation & management, fundamental concepts of ECM, terminologies, energy efficient technologies in electrical installations eg. motors, lighting etc., Energy Conservation Act, ECBC, etc. including some case studies	Energy managers, Energy Auditors, Electrical engineers working in design, consultancy, projects, operation & maintenance, etc.	6,750
LT13	REQUIREMENT OF SYSTEM & EQUIPMENT EARTHING	2	Need & purpose of earthing, various types & methods of earthing, selection of earthing system, system & equipment earthing, sizing of earth conductors, generator earthing, transformer earthing, earthing of sensitive electronic equipment, earth electrodes, measurement of earth resistance, earthing design, earth mat design, relevant rules, standards & regulations, lightning protection, good earthing practices.	Electrical engineers working with consultants consultants, panel builders, projects, contractors, operation & maintenance personnel, etc.	8,000
LT14	INTRODUCTION TO INDUSTRIAL ELECTRICAL SYSTEMS	3	Overview of Indian power system, typical industrial electric power distribution scheme, classroom sessions with workshop demonstrations giving exposure to a wide range of low voltage switchgear like contactors, overload relays, motor starters, circuit breakers, etc, basic overview of soft starter, drives, busbar trunking, Capacitors for power factor improvement, classroom sessions and workshop demonstrations	Final year/pre-final year students of electrical engineering, fresh graduates & diploma holders, electrical department faculties of engineering / polytechnic institutions	3,000
LT15	FIRE DETECTION & SECURITY SOLUTIONS	1	Basics of Fire Alarm System, Conventional & Addressable FAS, Field devices, Panels & Software, Design / BOQ from Floor plans, Installation & Commissioning, Demonstration of working FAS, Basics of CCTV, Analog Vs IP System, Selection of Camera Installation & Commissioning, Demonstration of working CCTV system.	Engineers working on electrical/automation systems in projects, premium residential buildings, commercial complexes, hotels, hospitals, etc.	3,500
LT16	BUILDING MANAGEMENT & ENERGY MANAGEMENT SYSTEMS	1	Basics of BMS, Components of BMS, Input & output devices, Controllers & Software, Installation & Commissioning, Energy Saving and Green building certification through BMS, Basics of Energy management, hardware and software features, Energy accounting & Analysis, Energy management cycle, Energy Profile & trends, checklist for Installation & Commissioning of EMS.	Engineers working on electrical/automation systems in projects, premium residential buildings, commercial complexes, hotels, hospitals, etc.	3,500
LT17	SELECTION, PROTECTION & MAINTENANCE OF TRANSFORMER	2	Selection, Classification, Operation of Power and Distribution transformer, Vector groups, Transformer protections, Routine tests for transformer, Testing of transformer oil, Transformer maintenance, Earthing of transformer, relevant IS/IEC standards.	Electrical engineers working in design, consultancy, projects, operation & maintenance, etc.	6,750
LT18	INDUSTRIAL ELECTRICIAN TRAINING PROGRAMME	2	Safety & good maintenance practices, hands-on workshop sessions on testing, troubleshooting & maintenance of low voltage switchgear such as contactors, overload relays, motor starters, switch disconnector fuse, good termination practices	Electricians working on electrical systems in projects, residential buildings, commercial complexes, hotels, hospitals, small and medium scale industries, etc.	2,000
LT19	ELECTRICIAN TRAINING PROGRAMME FOR RESIDENTIAL BUILDINGS	1	Basics of electricity, Selection of MCB, ELCB, Wires and accessories Introduction to Distribution boards.	Electricians working on electrical systems in projects, residential buildings, commercial complexes, hotels, hospitals, small and medium scale industries, etc.	1,000
LT20	SWITCHGEAR SELECTION - MOTOR CONTROL CENTRE (MCC)	2	Motor control and protection techniques, Selection of Controlgear product range includes Contactor, O/L Relay, starter - Type-2 co-ordination, starter wiring, Intelligent Motor protection Relays and MCC Design, overview of soft starter	Engineers/technical team members from consulting firms, panel builders, projects, OEMs, industries, contractors, end users etc., involved in selection of LV switchgear	5,500
LT21	SWITCHGEAR SELECTION - POWER CONTROL CENTRE (PCC)	2	LV Power distribution, Latest trends and selection of ACB, MCCB, SDF, Change-over and related accessories. Advance protection releases and settings. Discrimination among various Switchgear devices, Fault current calculation and selection through case studies	Engineers/technical team members from consulting firms, panel builders, projects, OEMs, industries, contractors, end users etc., involved in selection of LV switchgear	5,500
LT22	DESIGN OF CONTROL CIRCUITS	2	Control Circuits & Schemes Fundamental Graphical Symbols & Nomenclatures of Various Components, Guidelines for Control Circuit Diagram. Understanding Various Types of Circuits i.e. Power, Control, SLD, Interconnected Scheme, Terminal Details Etc. Development of Application Based Control Circuits Schemes, New Innovative Applications, Function & Usage of Various Controlling Devices, Selection of Control Wires & Control Transformer.	Electrical engineers working with consultants, panel builders, projects, contractors, operation & maintenance of electrical equipment, testing agencies, electrical utilities, etc.	6,750



## Contemporary Specialised Training Modules:

Apart from the Calendar programs, STC also announces below mentioned Specialised Training Modules on select Design concepts. These are typically one day modules and shall be announced from time to time. You may get in touch with nearest STC for more details on the same.

SR. NO.	PROGRAM	CONTENTS
1	Automatic Source Transfer Solutions in LV Systems	Various Schemes for ASTS, Comparison and selection criteria, Merits and Demerits of each type
2	Introduction to Control Devices	Application and use of various control devices, e.g. Rotary Switches, Types of Meters, Analog/Digital/CT etc., Timers and Supply Monitors, Actuators and Indicating devices
3	Type-2 co-ordination	Selection of Motor feeder components with Type-2 Co-ordination Selection criteria for Fuse and Fuse-less (MCCB / MPCB) Motor Feeders, Motors with Long starting time, Understanding the Importance of coordination with software simulation on specially developed training kit
4	Discrimination (Selectivity in LT Switchgears)	Understanding the Discrimination(selectivity), Types of Discriminations i.e. Current, Time, Energy and Intelligent Selectivity. Understanding of Time current characteristics of various devices (e.g. ACB, MCCB, Fuses etc.) and Simulation of case studies on specially designed Discrimination Simulation KIT
5	Application and effective use of Communication features in LT Switchgears	Fundamentals of communication, Understanding Communication in Switchgear and different communication protocols e.g. PROFIBUS, MODBUS, TCP IP etc., Hardware, software needs and practical demo on kits (Practical on Modbus communication)



Software Screen of Discrimination Simulation KIT



## Our Training Programs Help to

- Enhance Safety
- Minimise Cost
- Maximise Productivity
- Improve Profitability

## Our Milestones

- Celebrating over 29 years of Training Excellence
- Trained over 152000 Professionals
- Conducted over 8000 programs

For more information about the Training Calendar and programs please contact the relevant Switchgear Training Centre or Customer Interaction Centre:

### Switchgear Training Centres

#### Pune

Larsen & Toubro Limited  
Switchgear Training Centre  
T-156 / 157, MIDC  
Bhosari, Pune - 411 026  
Tel: 020 2712 0037 / 2712 0653  
Fax: 020 2712 2933  
E-mail: stc-pune@Lntebg.com



#### Vadodara

Larsen & Toubro Limited  
Switchgear Training Centre  
Behind L&T Knowledge City,  
Near Village Ankhola,  
Vadodara - 390019  
Tel: 0265 2457805  
E-mail: stc-vadodara@Lntebg.com



#### Lucknow

Larsen & Toubro Limited  
Switchgear Training Centre  
C-6 & 7, UPSIDC,  
P. O. Sarojininagar,  
Lucknow - 226 008  
Tel: 0522 247 6015 / 97944 54455  
Fax: 0522 247 6015  
E-mail: stc-lucknow@Lntebg.com



#### Delhi

Larsen & Toubro Ltd  
Switchgear Training Centre  
32, Shivaji Marg,  
Near Motinagar Metro Station,  
New Delhi - 110015  
Tel: 011 41419515 / 41419695 / 41419500  
Fax: 011 41419600  
E-mail: stc-delhi@Lntebg.com



#### Coonoor

Larsen & Toubro Limited  
Switchgear Training Centre  
Ooty-Coonoor Main Road  
Yellanahalli P.O.,  
The Nilgiris - 643 243  
Tel: 0423 251 7107  
Fax: 0423 251 7158  
E-mail: stc-coonoor@Lntebg.com



#### Kolkata

Larsen & Toubro Limited  
Switchgear Training Centre  
4th Floor, 3B, Shakespeare Sarani,  
Kolkata - 700071  
Tel: 033 42005975 / 42005978  
E-mail: stc-kolkata@Lntebg.com



### Customer Interaction Centre (CIC)

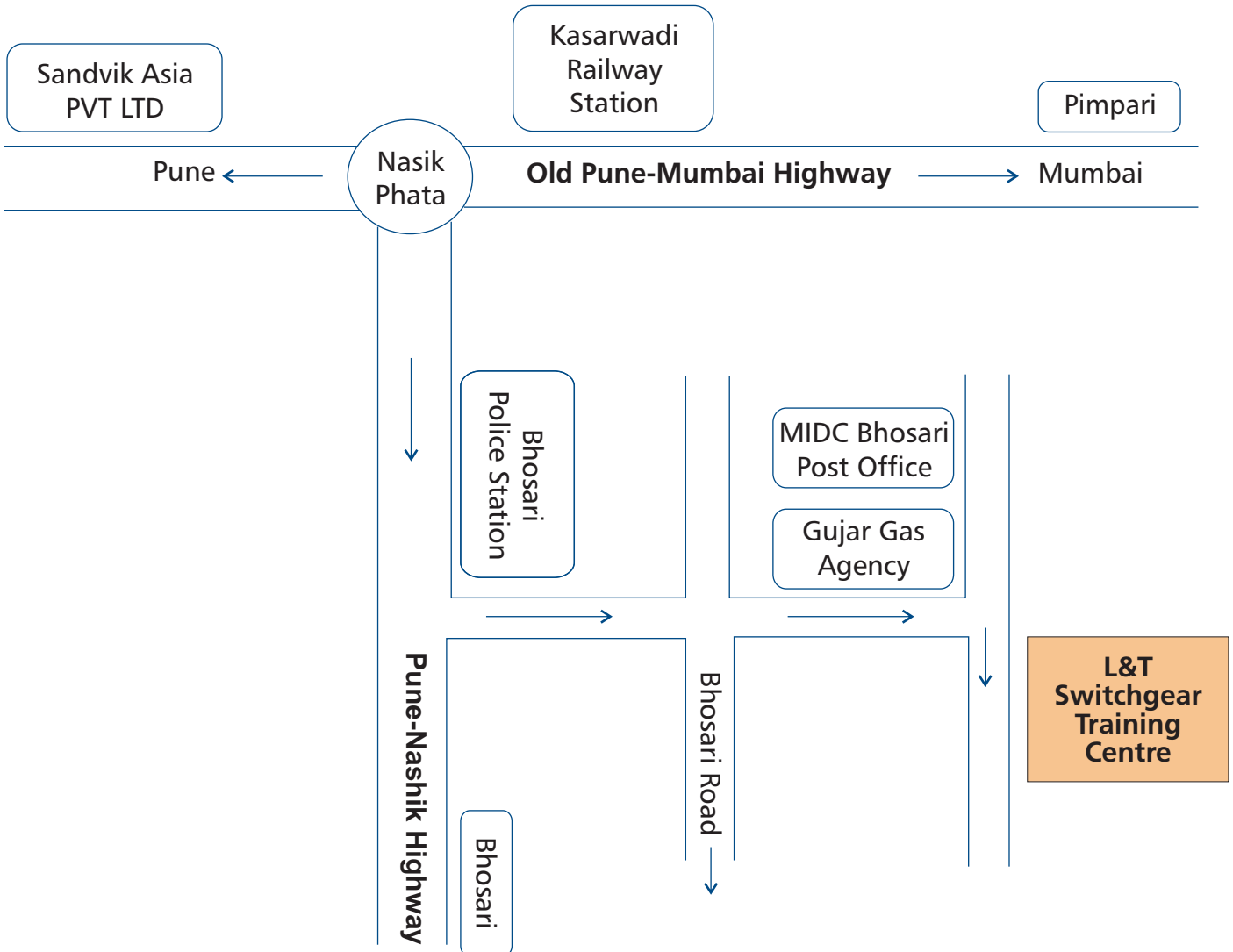
BSNL/MTNL (Toll free): 1800 233 5858  
Reliance (Toll free): 1800 200 5858  
Tel: 022 6774 5858 Fax: 022 6774 5859  
E-mail: cic@Lntebg.com

# TRAINING CALENDAR

			PUNE											
CODE	PROGRAMME NAME	DAYS	APR 2016	MAY 2016	JUN 2016	JUL 2016	AUG 2016	SEP 2016	OCT 2016	NOV 2016	DEC 2016	JAN 2017	FEB 2017	MAR 2017
LT01	SELECTION OF LV SWITCHGEAR AND APPLICATIONS	5	11-15		06-10		08-12		03-07		05-09		06-10	
LT02	BEST MAINTENANCE PRACTICES IN LV SWITCHGEAR	5		09-13		04-08		26-30		07-11		09-13		13-17
LT03	BREAKER MAINTENANCE WORKSHOP - C-POWER ACB	3	18-20		20-22		01-03		17-19		12-14		13-15	
LT04	BREAKER MAINTENANCE WORKSHOP - U-POWER OMEGA ACB	2	21-22		23-24		04-05		20-21		15-16		16-17	
LT05	SWITCHBOARD ELECTRICAL DESIGN	3				18-20		07-09		21-23		16-18		
LT06	POWER DISTRIBUTION IN BUILDINGS	3			01-03			12-14			26-28			
LT07	ELECTRICAL SAFETY	1		16		01			14			20		
LT08	SELECTION & APPLICATION OF DRIVES	3		18-20				21-23				18-20		
LT09	REACTIVE POWER & HARMONICS MITIGATION	2			29-30								27-28	
LT10	INTRODUCTION TO MEDIUM VOLTAGE SWITCHGEAR	2				26-27							20-21	
LT11	INDUSTRIAL PROTECTION WITH NUMERICAL RELAYS	4					22-25				19-22			
LT12	CONSERVATION & MANAGEMENT OF ELECTRICAL ENERGY	2			13-14						05-06			
LT13	REQUIREMENT OF SYSTEM & EQUIPMENT EARTHING	2			15-16						07-08			
LT14	INTRODUCTION TO INDUSTRIAL ELECTRICAL SYSTEMS	3	04-06	25-27	27-29	25-27	29-31	26-28	12-14	02-04	28-30	23-25	22-24	08-10
LT15	FIRE DETECTION & SECURITY SOLUTIONS	1	-	-	-	-	-	-	-	-	-	-	-	-
LT16	BUILDING MANAGEMENT & ENERGY MANAGEMENT SYSTEMS	1	-	-	-	-	-	-	-	-	-	-	-	-
LT17	SELECTION, PROTECTION & MAINTENANCE OF TRANSFORMER	2				28-29							22-23	
LT18	INDUSTRIAL ELECTRICIAN TRAINING PROGRAMME	2			15-16					28-29			06-07	
LT19	ELECTRICIAN TRAINING PROGRAMME FOR RESIDENTIAL BUILDINGS	1			17					30			08	
LT20	SWITCHGEAR SELECTION - MOTOR CONTROL CENTRE (MCC)	2		02-03		11-12		19-20		14-15		03-04		06-07
LT21	SWITCHGEAR SELECTION - POWER CONTROL CENTRE (PCC)	2		04-05		13-14		21-22		16-17		05-06		08-09
LT22	DESIGN OF CONTROL CIRCUITS	2					16-17		24-25		01-02			01-02



# STC PUNE LOCATION MAP



## Distance from:

### ❖ Railway Stations:

- ◆ Pune Railway Station - 15 Km
- ◆ Shivajinagar Railway Station – 12 Km
- ◆ Chinchwad Railway Station – 6 Km

### ❖ Airport:

- ◆ Pune Airport – 21 Km

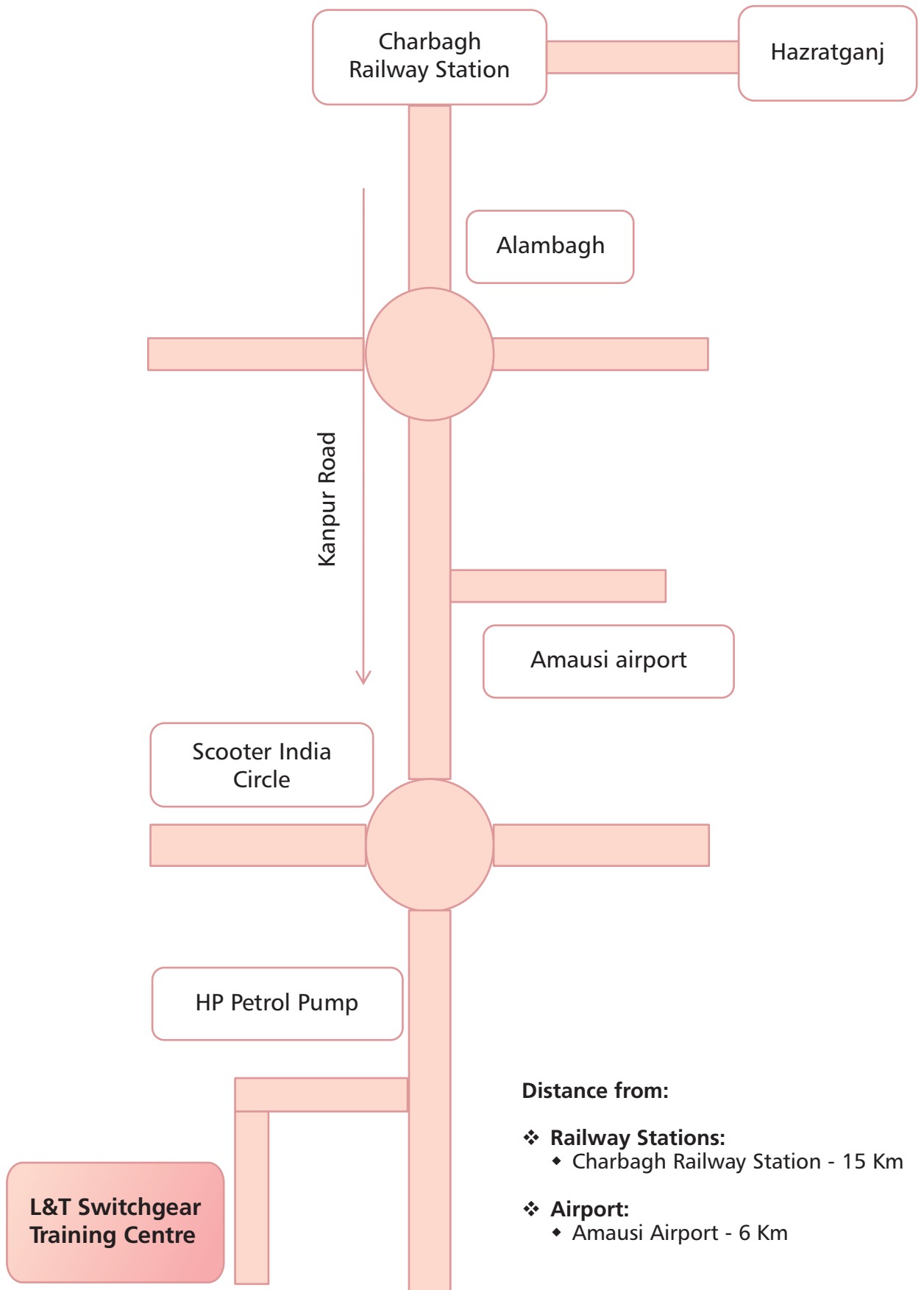
### ❖ Bus Stop:

- ◆ Shivajinagar Bus Stop – 12 Km
- ◆ Swarget Bus Stop – 16 Km
- ◆ Wakad Bus Stop – 12 Km
- ◆ Chinchwad Bus Stop – 6 Km





# STC LUCKNOW LOCATION MAP



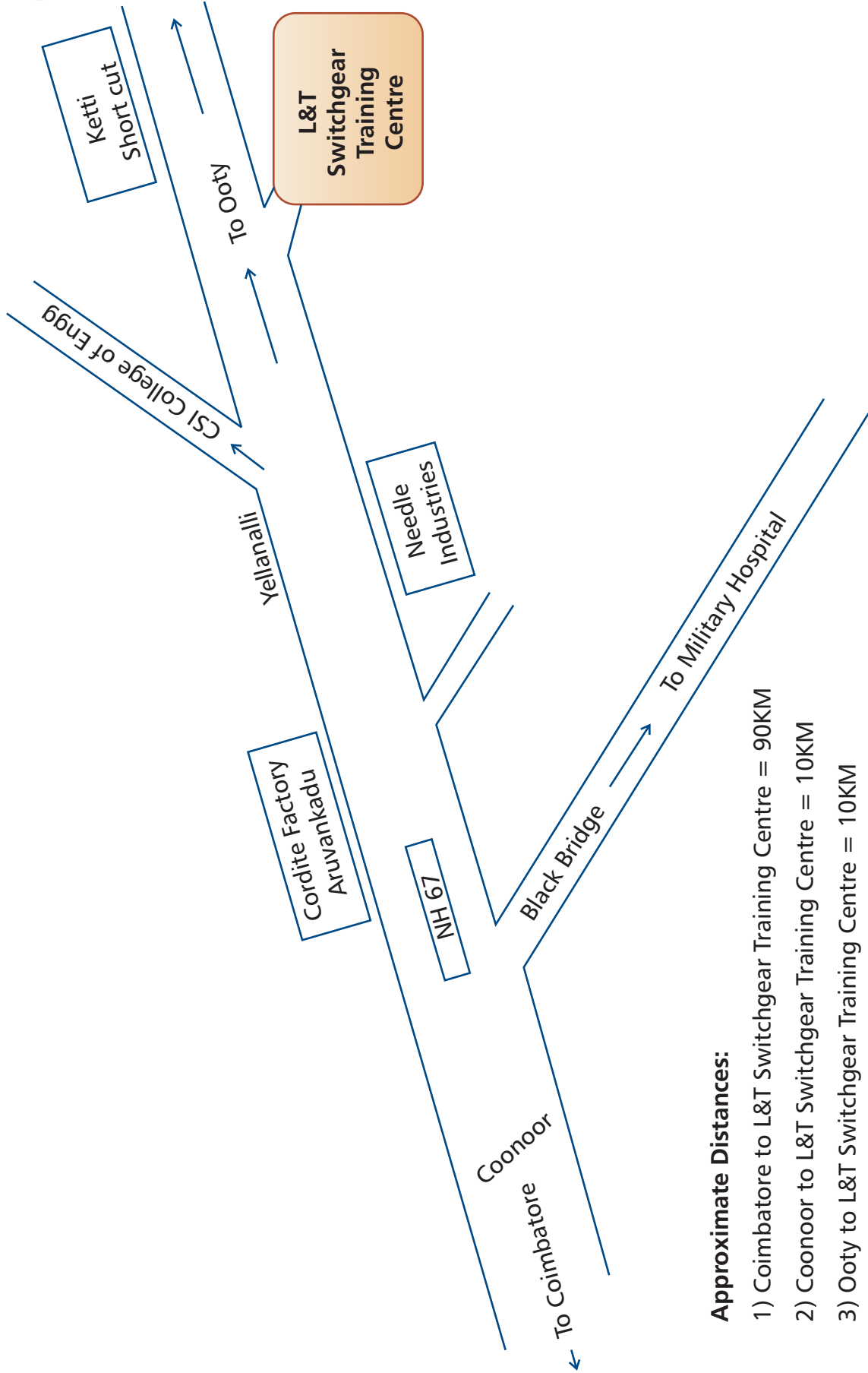


# TRAINING CALENDAR

			COONOOR											
CODE	PROGRAMME NAME	DAYS	APR 2016	MAY 2016	JUN 2016	JUL 2016	AUG 2016	SEP 2016	OCT 2016	NOV 2016	DEC 2016	JAN 2017	FEB 2017	MAR 2017
LT01	SELECTION OF LV SWITCHGEAR AND APPLICATIONS	5	4-8		6-10		1-5		3-7		5-9		6-10	
LT02	BEST MAINTENANCE PRACTICES IN LV SWITCHGEAR	5		9-13		4-8		19-23		7-11		2-6		6-10
LT03	BREAKER MAINTENANCE WORKSHOP - C-POWER ACB	3		16-18		18-20			17-19		12-14		20-22	
LT04	BREAKER MAINTENANCE WORKSHOP - U-POWER OMEGA ACB	2		19-20		21-22			20-21		15-16		23-24	
LT05	SWITCHBOARD ELECTRICAL DESIGN	3		23-25				7-9		14-16		9-11		
LT06	POWER DISTRIBUTION IN BUILDINGS	3												
LT07	ELECTRICAL SAFETY	1		6			29			25				23
LT08	SELECTION & APPLICATION OF DRIVES	3	11-13				17-19				12-14			1-3
LT09	REACTIVE POWER & HARMONICS MITIGATION	2	21-22			14-15				3-4			2-3	
LT10	INTRODUCTION TO MEDIUM VOLTAGE SWITCHGEAR	2					11-12							29-30
LT11	INDUSTRIAL PROTECTION WITH NUMERICAL RELAYS	4	26-29		13-16					1-4				13-16
LT12	CONSERVATION & MANAGEMENT OF ELECTRICAL ENERGY	2			20-21					28-29				
LT13	REQUIREMENT OF SYSTEM & EQUIPMENT EARTHING	2			22-23					30 Nov -1 Dec				
LT14	INTRODUCTION TO INDUSTRIAL ELECTRICAL SYSTEMS	3	18-20	16-18	1-3 27-29	11-13 25-27	8-10 22-24	12-14 14-16	12-14	28-30	19-21 26-28	16-18 23-25	15-17	20-22
LT15	FIRE DETECTION & SECURITY SOLUTIONS	1	-	-	-	-	-	-	-	-	-	-	-	-
LT16	BUILDING MANAGEMENT & ENERGY MANAGEMENT SYSTEMS	1	-	-	-	-	-	-	-	-	-	-	-	-
LT17	SELECTION, PROTECTION & MAINTENANCE OF TRANSFORMER	2					9-10							27-28
LT18	INDUSTRIAL ELECTRICIAN TRAINING PROGRAMME	2	25-26					22-23		24-25		18-19		
LT19	ELECTRICIAN TRAINING PROGRAMME FOR RESIDENTIAL BUILDINGS	1	27				24		26			20		
LT20	SWITCHGEAR SELECTION - MOTOR CONTROL CENTRE (MCC)	2		2-3				26-27					13-14	
LT21	SWITCHGEAR SELECTION - POWER CONTROL CENTRE (PCC)	2		4-5				28-29					15-16	
LT22	DESIGN OF CONTROL CIRCUITS	2		26-27				1-2					27-28	



# STC COONOOR LOCATION MAP



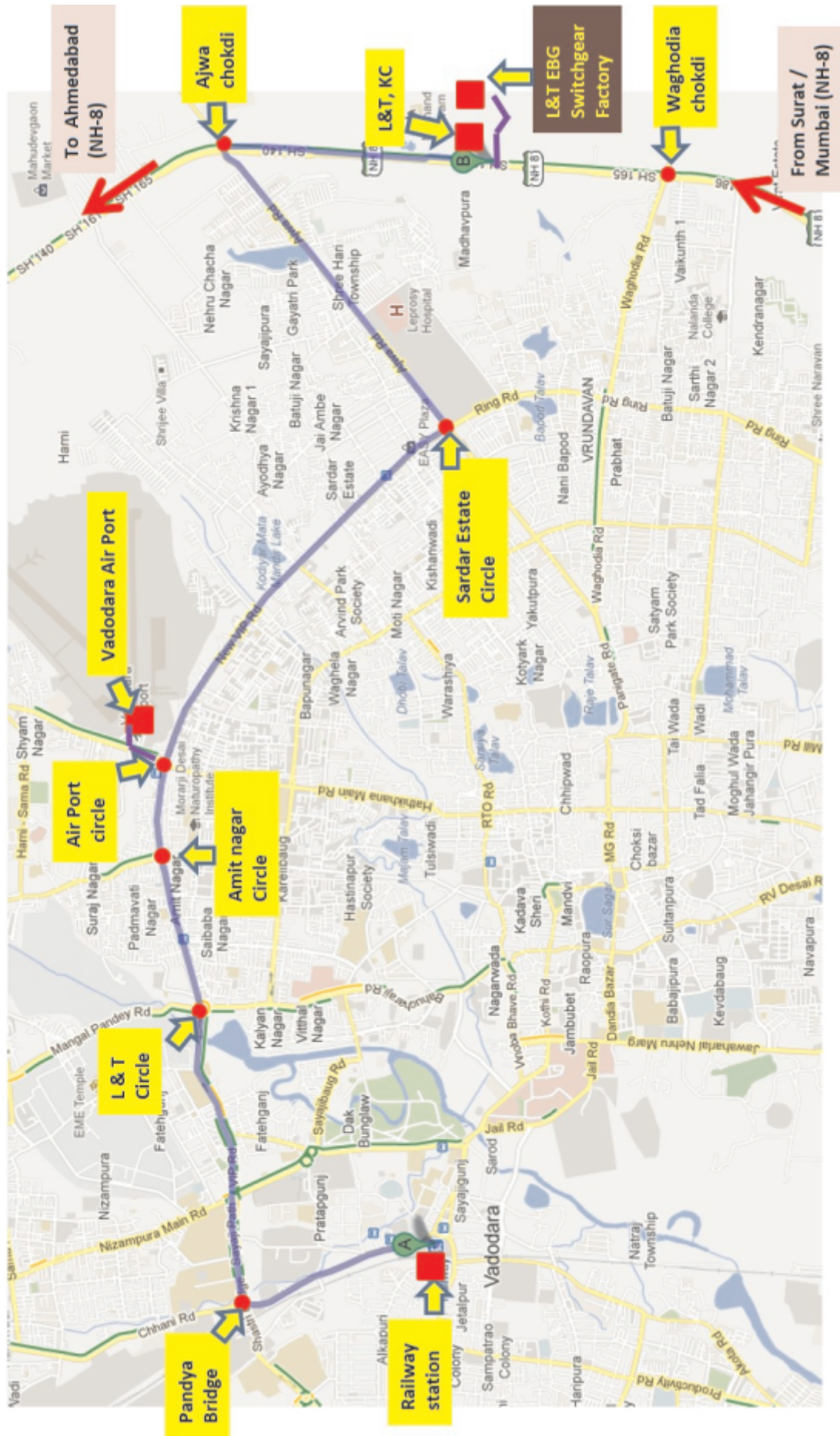
# TRAINING CALENDAR

## VADODARA

CODE	PROGRAMME NAME	DAYS	APR 2016	MAY 2016	JUN 2016	JUL 2016	AUG 2016	SEP 2016	OCT 2016	NOV 2016	DEC 2016	JAN 2017	FEB 2017	MAR 2017
LT01	SELECTION OF LV SWITCHGEAR AND APPLICATIONS	5				18-22			03-07			16-20		
LT02	BEST MAINTENANCE PRACTICES IN LV SWITCHGEAR	5			20-24			26-30			26-30			
LT03	BREAKER MAINTENANCE WORKSHOP - C-POWER ACB	3		16-18			01-03			21-23			06-08	
LT04	BREAKER MAINTENANCE WORKSHOP - U-POWER OMEGA ACB	2		19-20			04-05			24-25			09-10	
LT05	SWITCHBOARD ELECTRICAL DESIGN	3			07-09			14-16					07-09	
LT06	POWER DISTRIBUTION IN BUILDINGS	3				11-13				07-09				
LT07	ELECTRICAL SAFETY	1					10						02	
LT08	SELECTION & APPLICATION OF DRIVES	3			01-03				03-05					06-08
LT09	REACTIVE POWER & HARMONICS MITIGATION	2				21-22					21-22			
LT10	INTRODUCTION TO MEDIUM VOLTAGE SWITCHGEAR	2		16-17								03-04		
LT11	INDUSTRIAL PROTECTION WITH NUMERICAL RELAYS	4				11-14				07-10				20-23
LT12	CONSERVATION & MANAGEMENT OF ELECTRICAL ENERGY	2						19-20						06-07
LT13	REQUIREMENT OF SYSTEM & EQUIPMENT EARTHING	2						21-22						08-09
LT14	INTRODUCTION TO INDUSTRIAL ELECTRICAL SYSTEMS	3	25-27		13-15		22-24	19-21		14-16		04-06	21-23	
LT15	FIRE DETECTION & SECURITY SOLUTIONS	1	-	-	-	-	-	-	-	-	-	-	-	-
LT16	BUILDING MANAGEMENT & ENERGY MANAGEMENT SYSTEMS	1	-	-	-	-	-	-	-	-	-	-	-	-
LT17	SELECTION, PROTECTION & MAINTENANCE OF TRANSFORMER	2		18-19								05-06		
LT18	INDUSTRIAL ELECTRICIAN TRAINING PROGRAMME	2	20-21						05-06				23-24	
LT19	ELECTRICIAN TRAINING PROGRAMME FOR RESIDENTIAL BUILDINGS	1	19						4				22	
LT20	SWITCHGEAR SELECTION - MOTOR CONTROL CENTRE (MCC)	2		16-17				26-27			05-06			01-02
LT21	SWITCHGEAR SELECTION - POWER CONTROL CENTRE (PCC)	2		18-19				28-29			07-08			03-04
LT22	DESIGN OF CONTROL CIRCUITS	2						21-22				09-10		



# STC VADODARA LOCATION MAP



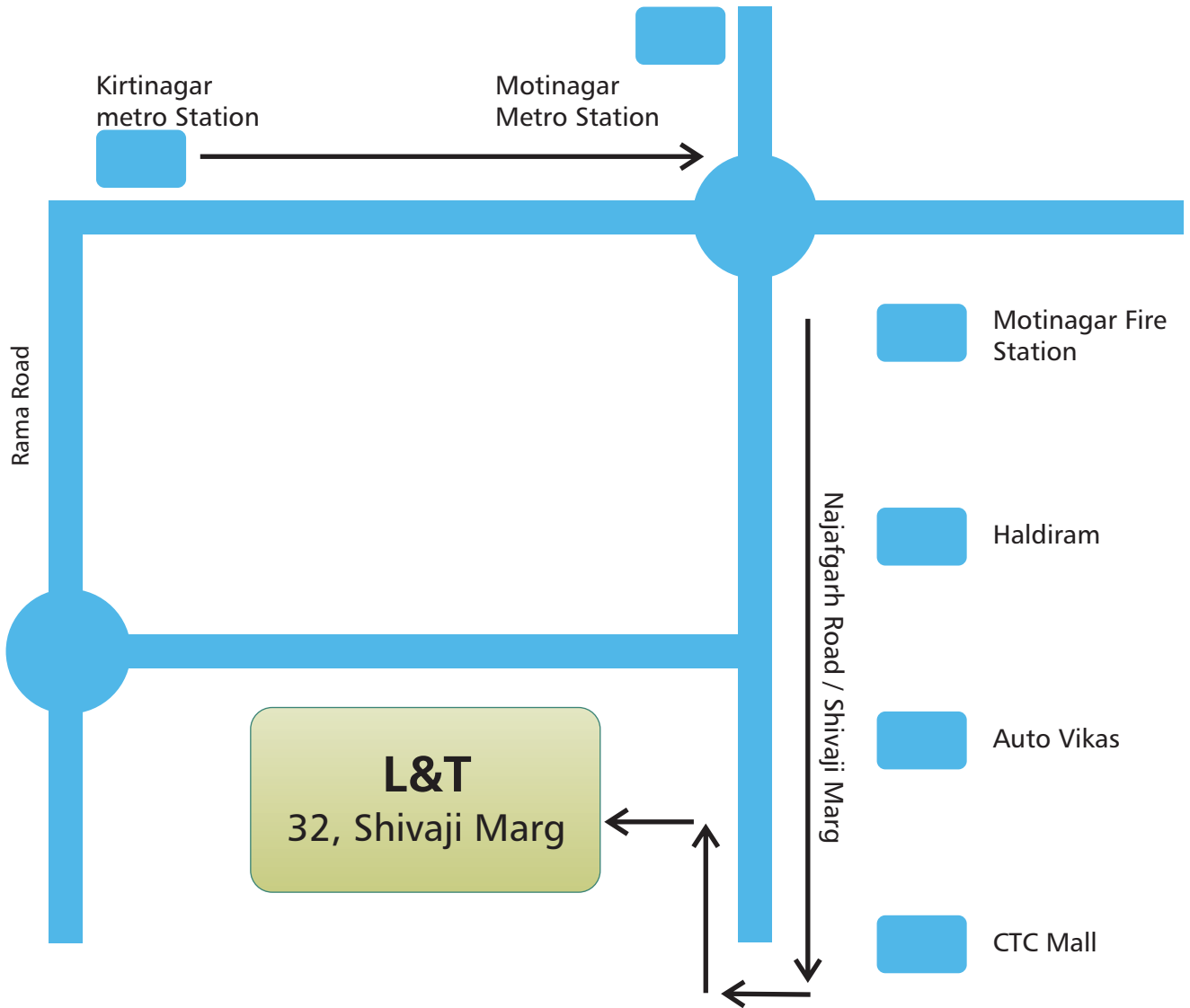
# TRAINING CALENDAR

			DELHI											
CODE	PROGRAMME NAME	DAYS	APR 2016	MAY 2016	JUN 2016	JUL 2016	AUG 2016	SEP 2016	OCT 2016	NOV 2016	DEC 2016	JAN 2017	FEB 2017	MAR 2017
LT01	SELECTION OF LV SWITCHGEAR AND APPLICATIONS	5		2-6				19-23				9-13		
LT02	BEST MAINTENANCE PRACTICES IN LV SWITCHGEAR	5	4-8				8-12				26-30			
LT03	BREAKER MAINTENANCE WORKSHOP - C-POWER ACB	3		9-11		18-20		26-28		7-9		16-18		20-22
LT04	BREAKER MAINTENANCE WORKSHOP - U-POWER OMEGA ACB	2		12-13		21-22		29-30		10-11		19-20		23-24
LT05	SWITCHBOARD ELECTRICAL DESIGN	3			6-8			14-16			21-23			1-3
LT06	POWER DISTRIBUTION IN BUILDINGS	3	11-13			4-6			24-26			23-25		
LT07	ELECTRICAL SAFETY	1	1		10			1			19			
LT08	SELECTION & APPLICATION OF DRIVES	3		23-25			8-10					2-4		
LT09	REACTIVE POWER & HARMONICS MITIGATION	2	28-29			7-8			13-14			30-31		
LT10	INTRODUCTION TO MEDIUM VOLTAGE SWITCHGEAR	2					16-17			3-4			27-28	
LT11	INDUSTRIAL PROTECTION WITH NUMERICAL RELAYS	4			21-24				3-6				6-9	
LT12	CONSERVATION & MANAGEMENT OF ELECTRICAL ENERGY	2		16-17			22-23			17-18			2-3	
LT13	REQUIREMENT OF SYSTEM & EQUIPMENT EARTHING	2	21-22			11-12			17-18			5-6		
LT14	INTRODUCTION TO INDUSTRIAL ELECTRICAL SYSTEMS	3	25-27		13-15		29-31		3-5		5-7		13-15	
LT15	FIRE DETECTION & SECURITY SOLUTIONS	1			28					29				
LT16	BUILDING MANAGEMENT & ENERGY MANAGEMENT SYSTEMS	1			29					30				
LT17	SELECTION, PROTECTION & MAINTENANCE OF TRANSFORMER	2				14-15				21-22				9-10
LT18	INDUSTRIAL ELECTRICIAN TRAINING PROGRAMME	2	18-19		16-17		22-23		20-21		8-9		20-21	
LT19	ELECTRICIAN TRAINING PROGRAMME FOR RESIDENTIAL BUILDINGS	1		18		25		5		28		27		15
LT20	SWITCHGEAR SELECTION - MOTOR CONTROL CENTRE (MCC)	2		23-24				3-4			24-25		16-17	
LT21	SWITCHGEAR SELECTION - POWER CONTROL CENTRE (PCC)	2	18-19			28-29					1-2			16-17
LT22	DESIGN OF CONTROL CIRCUITS	2				26-27						30-31		





# STC DELHI LOCATION MAP



# TRAINING CALENDAR

			KOLKATA											
CODE	PROGRAMME NAME	DAYS	APR 2016	MAY 2016	JUN 2016	JUL 2016	AUG 2016	SEP 2016	OCT 2016	NOV 2016	DEC 2016	JAN 2017	FEB 2017	MAR 2017
LT01	SELECTION OF LV SWITCHGEAR AND APPLICATIONS	5			20-24			4-9			5-9			20-24
LT02	BEST MAINTENANCE PRACTICES IN LV SWITCHGEAR	5	25-29			11-15			17-21				13-17	
LT03	BREAKER MAINTENANCE WORKSHOP - C-POWER ACB	3	18-20		13-15		8-10		24-26		12-14		6-8	
LT04	BREAKER MAINTENANCE WORKSHOP - U-POWER OMEGA ACB	2	21-22		16-17		11-12		27-28		15-16		9-10	
LT05	SWITCHBOARD ELECTRICAL DESIGN	3					29-31					4-6		
LT06	POWER DISTRIBUTION IN BUILDINGS	3				4-6				16-18				
LT07	ELECTRICAL SAFETY	1						23						17
LT08	SELECTION & APPLICATION OF DRIVES	3			6-8			12-14			19-21			13-15
LT09	REACTIVE POWER & HARMONICS MITIGATION	2				18-20						9-10		
LT10	INTRODUCTION TO MEDIUM VOLTAGE SWITCHGEAR	2						15-16						8-9
LT11	INDUSTRIAL PROTECTION WITH NUMERICAL RELAYS	4			27-30			19-22				17-20		
LT12	CONSERVATION & MANAGEMENT OF ELECTRICAL ENERGY	2					16-17			21-22				
LT13	REQUIREMENT OF SYSTEM & EQUIPMENT EARTHING	2					18-19			23-24				
LT14	INTRODUCTION TO INDUSTRIAL ELECTRICAL SYSTEMS	3	11-13	8-10	1-3	25-27	22-24	26-28	3-5	7-9	26-28	23-25	20-22	27-29
LT15	FIRE DETECTION & SECURITY SOLUTIONS	1	-	-	-	-	-	-	-	-	-	-	-	-
LT16	BUILDING MANAGEMENT & ENERGY MANAGEMENT SYSTEMS	1	-	-	-	-	-	-	-	-	-	-	-	-
LT17	SELECTION, PROTECTION & MAINTENANCE OF TRANSFORMER	2				21-22				14-15				6-7
LT18	INDUSTRIAL ELECTRICIAN TRAINING PROGRAMME	2				28-29						18-19		
LT19	ELECTRICIAN TRAINING PROGRAMME FOR RESIDENTIAL BUILDINGS	1						29				20		
LT20	SWITCHGEAR SELECTION - MOTOR CONTROL CENTRE (MCC)	2		23-24				1-2				30-31		
LT21	SWITCHGEAR SELECTION - POWER CONTROL CENTRE (PCC)	2		25-26				3-4					27-28	
LT22	DESIGN OF CONTROL CIRCUITS	2		18-19					13-14				22-23	



# STC KOLKATA LOCATION MAP

**LARSEN & TOUBRO LIMITED, Kolkata, West Bengal**

**Search nearby: (hotels-restaurants)**

**LARSEN & TOUBRO LIMITED**  
3B, Shakespeare Sarani, Elgin  
Kolkata, West Bengal 700071  
Open today 8:45 am - 6:30 pm

1 review · Manufacturer  
Write a review · Add a photo  
Suggest an edit · Are you the business owner?

Directions  
larsentoubro.com  
033 4400 2301

Save

Map labels: Vardaan Market, Govind Mahal, Rupahalli Sarees Pvt, WBIDC Towers, Badalla Gems, Advantage Bengal, Pantaloons, Indian Council for Cultural Relations, Agrawal Property Dealer, Consulate of the United States of America, Harrington Court, Nightingale Hospital, AC Market, The Metro Plaza Shopping Mall, The Senator, Industry House, NIIT, Shantiniketan Building, Nopany Institute of Professional Studies, Cocoon Fine Rugs, Tripura Bhavan, BK Market, Sakhawat Memorial Govt. Girls' High School, CBI, Sheetal, Emami Shopper City, Victoria Memorial and Light Show, Victoria Fountain, Academy of Fine Arts, The Loudon, Sushila Birla Girls' School, The Saturday Club, DBS, HNG Tower, Nature Study P, Outram St, Hungerford Street, Wood St, Albert Road, Upper Wood St, Moira St, Shakespeare Sarani Rd, Camac St, Jawaharlal Nehru Rd, Cathedral Rd, Lord Sinha Road, Sundeepp Apartment, Google, Earth.